

Ashtons



10 Railway View YO24 2HS

£1,150 Per Month

2



1



1



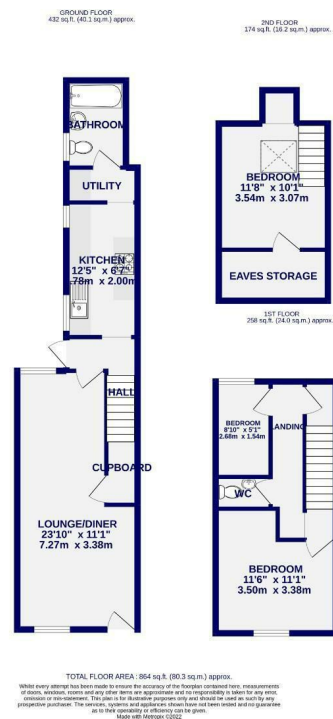
C





This wonderful period terrace home is located just a short distance from the desirable Tadcaster Road which provides quick access to the City Centre and A64. The property is offered on a unfurnished basis and comprises; lounge through dining room, modern fitted kitchen with a range of wall and base units, electric oven, hob, fridge freezer and washing machine and ground floor bathroom with shower over bath. To the first floor is a double bedroom with wardrobe, second room which is ideal for a nursery/study and WC. Further double bedroom to the second floor with chest of draws. The property also benefits from a large private rear yard with store. Available 24th May

Council tax band B / 12 Month tenancy / Deposit : £1095 / EPC Rating C



Ashtons Lettings



01904 731404



lettings@ashtonsnet.com

